

# Rotations

## Home Link 5-10

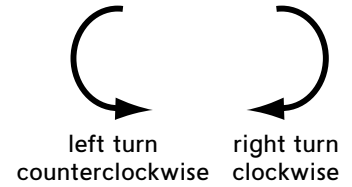
NAME \_\_\_\_\_

DATE \_\_\_\_\_

TIME \_\_\_\_\_

**Family Note** If your child needs help with the following problems, consider putting up signs in a room in your home to indicate the directions *north, south, east, and west*. Do the turns with your child.

**Please return this Home Link to school tomorrow.**



Make the turns described below. Show which way you face after each turn by:

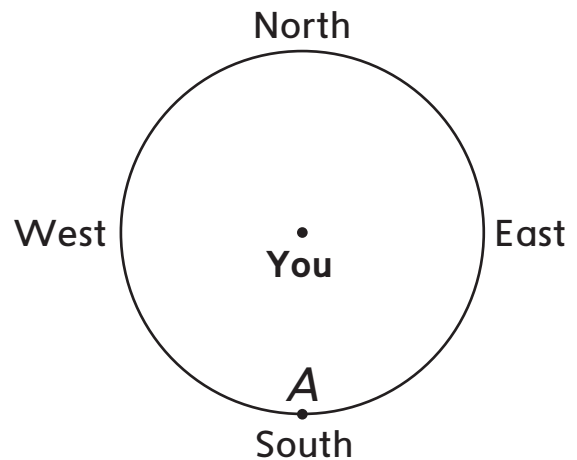


- Drawing a dot on the circle.
- Labeling the dot with a letter.

**Example:** Face north.

Do a  $\frac{1}{2}$  turn counterclockwise.

On the circle, mark the direction you are facing with the letter A.



- ① Face north. Do a  $\frac{1}{4}$  turn clockwise. Mark the direction you are facing with the letter B.
- ② Face north. Do a  $\frac{3}{4}$  turn clockwise. Mark the direction you are facing with the letter C.
- ③ Face east. Do a  $\frac{1}{4}$  turn counterclockwise. Mark the direction you are facing with the letter D.
- ④ Face west. Make less than a  $\frac{1}{4}$  turn clockwise. Mark the direction you are facing with the letter E.
- ⑤ Face north. Make a clockwise turn that is more than a  $\frac{1}{2}$  turn but less than a  $\frac{3}{4}$  turn. Mark the direction you are facing with the letter F.
- ⑥ Face north. Make a counterclockwise turn that is less than a  $\frac{1}{2}$  turn but more than a  $\frac{1}{4}$  turn. Mark the direction you are facing with the letter G.

## Practice

⑦  $85 * 50 =$  \_\_\_\_\_

⑧  $416 * 6 =$  \_\_\_\_\_

⑨ \_\_\_\_\_  $= 597 * 4$

⑩  $1,373 * 7 =$  \_\_\_\_\_